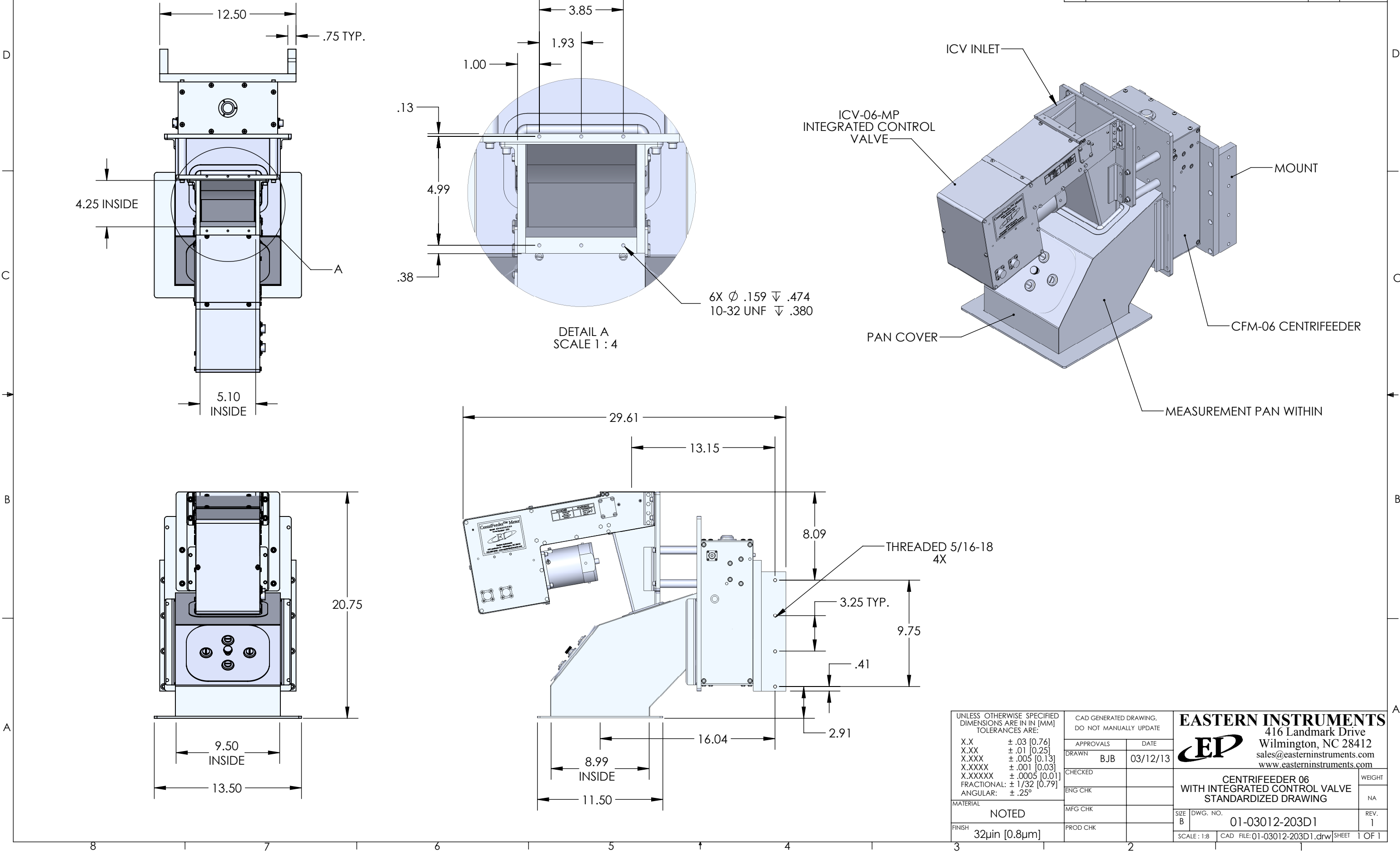


THE INFORMATION CONTAINED IN THIS DRAWING IS THE SOLE PROPERTY OF EASTERN INSTRUMENTS ANY REPRODUCTION IN PART OR WHOLE WITHOUT THE WRITTEN PERMISSION OF EASTERN INSTRUMENTS IS PROHIBITED.

REVISIONS			
REV.	DESCRIPTION	DATE	DRAWN BY
1	REMOVED IN FEED TRANSITION FROM DRAWING	8/19/15	RCH



8 7 6 5 4 3 2 1

THE INFORMATION CONTAINED IN THIS DRAWING IS THE SOLE PROPERTY OF EASTERN INSTRUMENTS ANY REPRODUCTION IN PART OR WHOLE WITHOUT THE WRITTEN PERMISSION OF EASTERN INSTRUMENTS IS PROHIBITED.

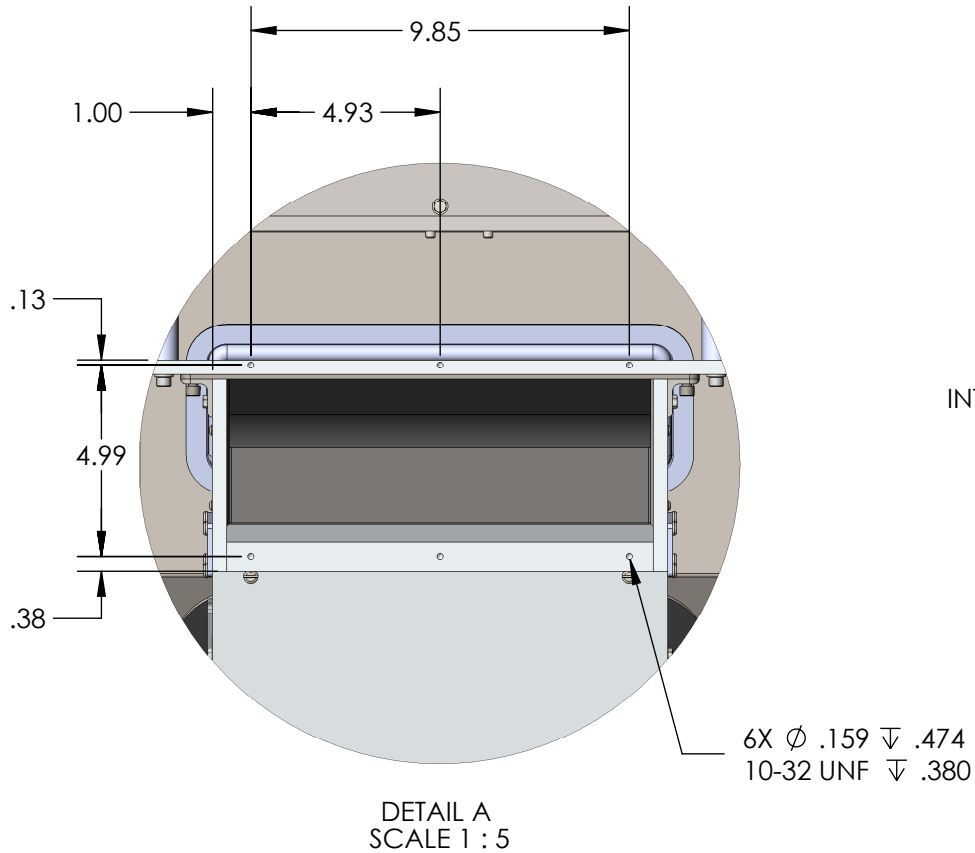
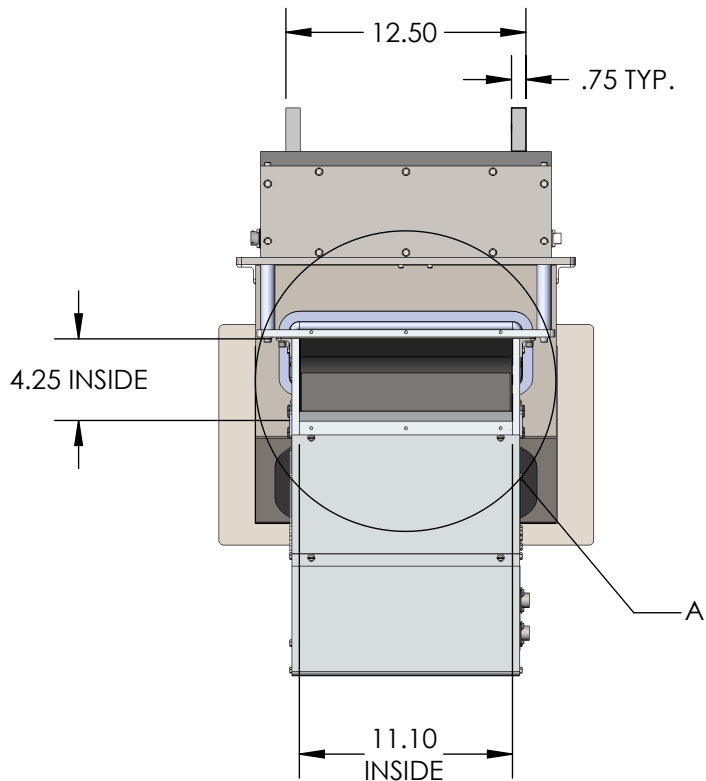
REVISIONS			
REV.	DESCRIPTION	DATE	DRAWN BY
1	REMOVED IN FEED TRANSITION FROM DRAWING	8/19/15	RCH

D

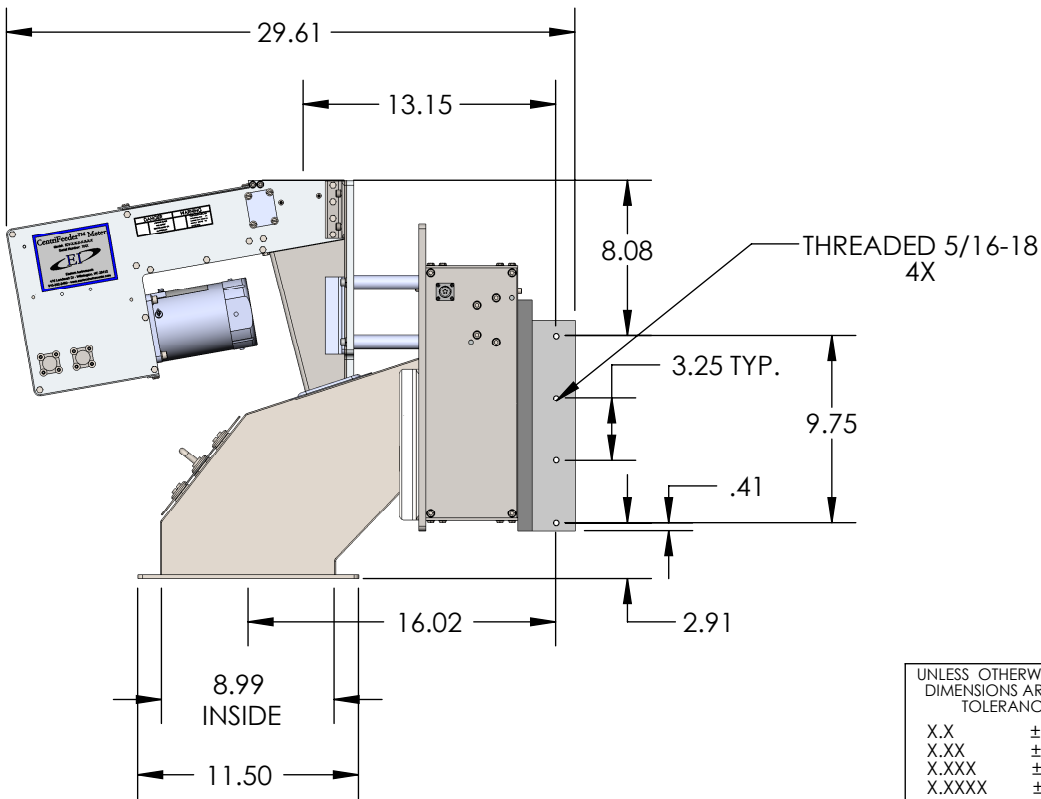
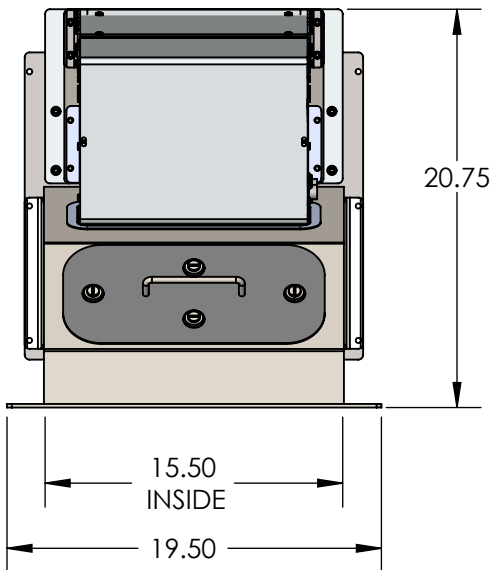
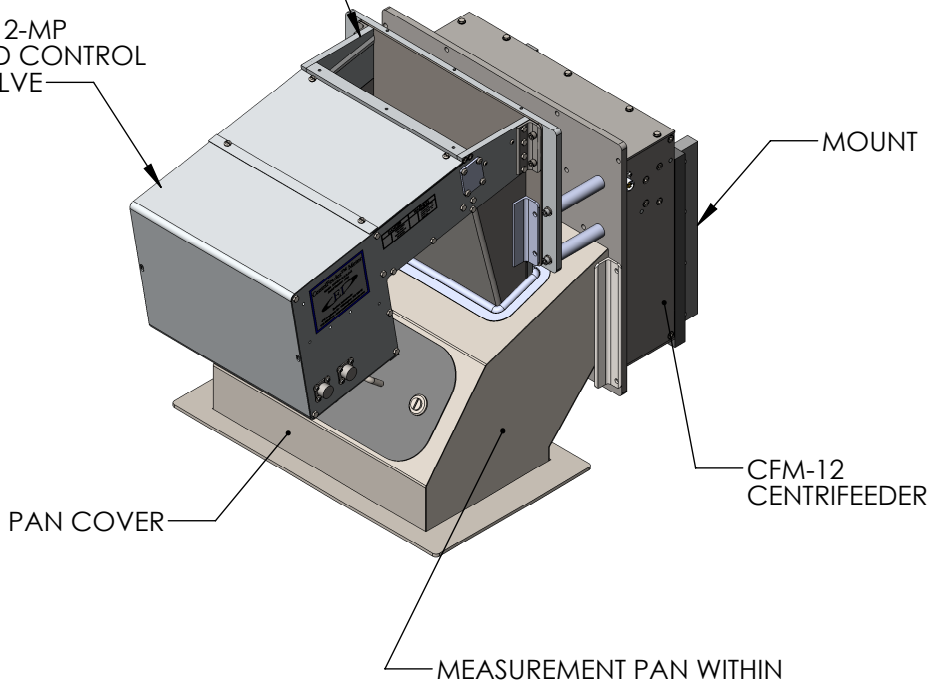
C

B

A



ICV INLET
ICV-12-MP
INTEGRATED CONTROL
VALVE



UNLESS OTHERWISE SPECIFIED DIMENSIONS ARE IN IN [MM] TOLERANCES ARE:	
X.X	± .03 [0.76]
X.XX	± .01 [0.25]
X.XXX	± .005 [0.13]
X.XXXX	± .001 [0.03]
X.XXXXX	± .0005 [0.01]
FRACTIONAL:	± 1/32 [0.79]
ANGULAR:	± .25°
MATERIAL	NA
FINISH	32µin [0.8µm]

CAD GENERATED DRAWING, DO NOT MANUALLY UPDATE	
APPROVALS	DATE
DRAWN BJB	09/02/11
CHECKED	
ENG CHK	
MFG CHK	
PROD CHK	

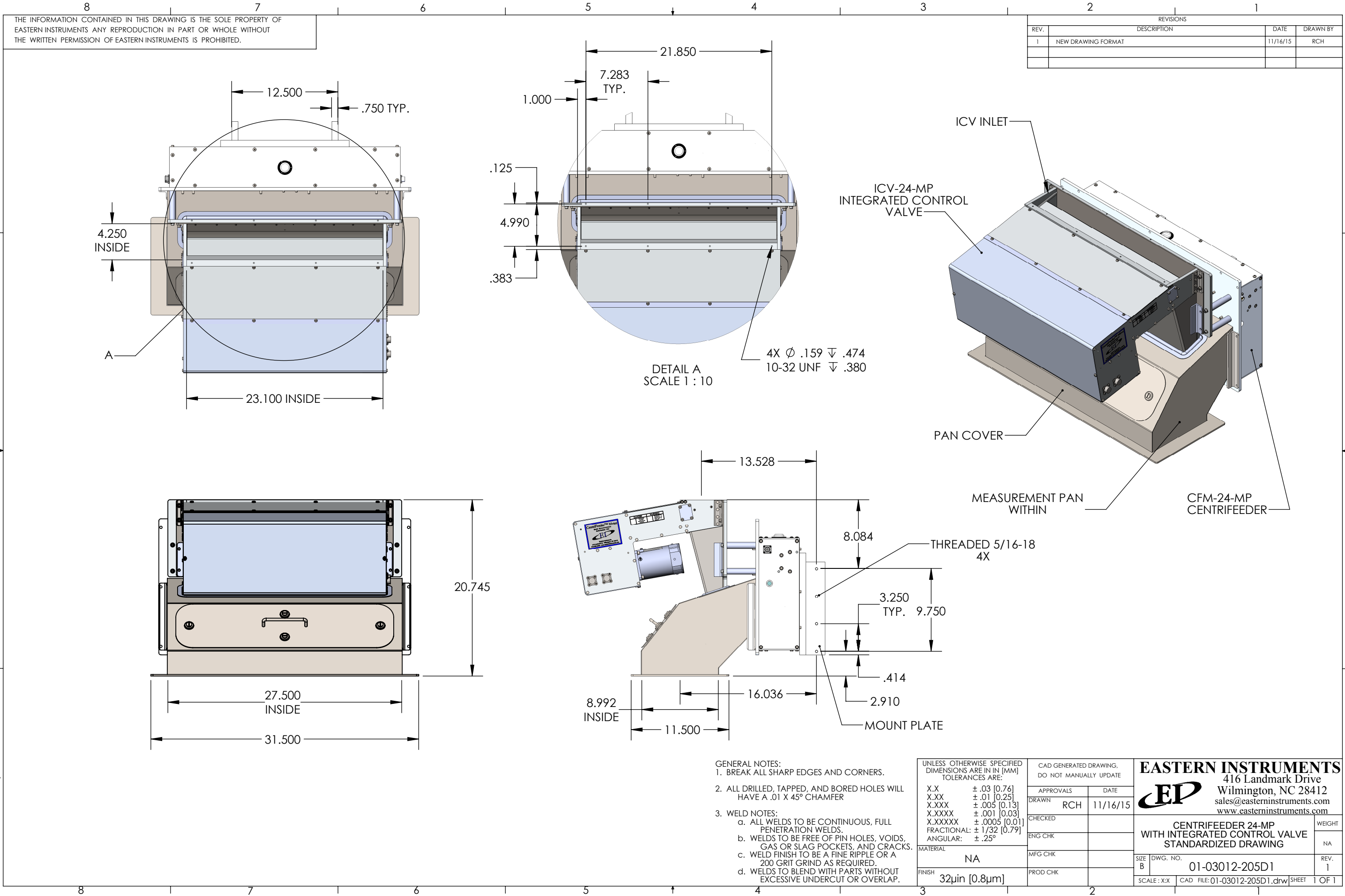
EASTERN INSTRUMENTS 416 Landmark Drive Wilmington, NC 28412 sales@easterninstruments.com www.easterninstruments.com	
CENTRIFEEDER 12-MP WITH INTEGRATED CONTROL VALVE STANDARDIZED DRAWING	
SIZE B	DWG. NO. 01-03012-204D1
SCALE: 1:10	CAD FILE: 01-03012-204D1.drw
SHEET 1	OF 1

D

C

B

A



THE INFORMATION CONTAINED IN THIS DRAWING IS THE SOLE PROPERTY OF EASTERN INSTRUMENTS ANY REPRODUCTION IN PART OR WHOLE WITHOUT THE WRITTEN PERMISSION OF EASTERN INSTRUMENTS IS PROHIBITED.

REVISIONS			
REV.	DESCRIPTION	DATE	DRAWN BY
1	NEW DRAWING FORMAT	11/16/15	RCH

DETAIL A
SCALE 1 : 10

- GENERAL NOTES:
- BREAK ALL SHARP EDGES AND CORNERS.
 - ALL DRILLED, TAPPED, AND BORED HOLES WILL HAVE A .01 X 45° CHAMFER
 - WELD NOTES:
 - ALL WELDS TO BE CONTINUOUS, FULL PENETRATION WELDS.
 - WELDS TO BE FREE OF PIN HOLES, VOIDS, GAS OR SLAG POCKETS, AND CRACKS.
 - WELD FINISH TO BE A FINE RIPPLE OR A 200 GRIT GRIND AS REQUIRED.
 - WELDS TO BLEND WITH PARTS WITHOUT EXCESSIVE UNDERCUT OR OVERLAP.

UNLESS OTHERWISE SPECIFIED DIMENSIONS ARE IN IN [MM] TOLERANCES ARE:	
X.X	± .03 [0.76]
X.XX	± .01 [0.25]
X.XXX	± .005 [0.13]
X.XXXX	± .001 [0.03]
X.XXXXX	± .0005 [0.01]
FRACTIONAL:	± 1/32 [0.79]
ANGULAR:	± .25°
MATERIAL	NA
FINISH	32µin [0.8µm]

CAD GENERATED DRAWING, DO NOT MANUALLY UPDATE	
APPROVALS	DATE
DRAWN RCH	11/16/15
CHECKED	
ENG CHK	
MFG CHK	
PROD CHK	

EASTERN INSTRUMENTS			
416 Landmark Drive Wilmington, NC 28412 sales@easterninstruments.com www.easterninstruments.com			
CENTRIFEEDER 24-MP WITH INTEGRATED CONTROL VALVE STANDARDIZED DRAWING			WEIGHT
			NA
SIZE B	DWG. NO.	REV.	1
	01-03012-205D1		
SCALE: X:X	CAD FILE: 01-03012-205D1.drw	SHEET	1 OF 1